

**Catalog
No. 25**

ALL
PURPOSE
SHAW DU-ALL)
TRACTORS
AND
POWER
MOWERS

Form No.
31653



FOR ALL
JOBS ON
SMALL
FARMS
AND
MANY
JOBS ON
LARGE
FARMS

SHAW MFG. CO.
Galesburg, Kans.
and
668 No. 4th St.,
Columbus, O.

INTRODUCTION

1953 marks our 50th year of building gasoline engines and garden tractors, however, we discontinued building engines several years ago to devote more time to the manufacture of Garden Tractors. We now use rugged air cooled engines that have stood the test of hard work for years. Our tractors have heavy duty transmissions and differentials as well as the final drive gears and are equipped with high grade ball and Timken roller bearings. They are the result of many years of experience and grueling tests which have proved their ruggedness. You have a choice of electric or hand starters, and hydraulic or hand control tools.

CONTENTS

	Pages		Pages
Cultivators	17, 18, 19, 21, 22, 33, 35, 43	Loader	38
Cutter Bars	23, 24, 27, 28, 29, 30, 31	Moldboard Plows	1, 7, 8, 12, 13, 14, 34, 45
Disc Harrows	15, 16	Planter	37
Disc Plows	9, 10, 11	Pulling Test	36, 45
Electric Equipment	6, 27, 41	Saws	39
Guarantee	46	Snow Plows & Bulldozers	27, 40, 46
Harrow	20	Specifications	47
Hauling Cart	3	Sprayers	4, 5
Hay Rakes	25, 26	Tillage Tools	Back Cover
Hydraulic Equipment	8, 10, 27, 38	Transmission Gears	19
Lamps, Electric	41	Transporting	41, 42
Lawn Mowers	32		

Walking Type Tractors and Rotary Pulverizers are shown in separate circulars. Will be mailed on request.

SHAW MANUFACTURING COMPANY

Galesburg, Kansas

668 North 4th Street
Columbus, 8, Ohio

This is the Model R8 **SHAW DU-ALL** Tractor equipped with 7 x 24" and 4.00 x 12" tires, and F22 fenders. The engine develops over 8 H. P. and the tractor handles 12" mold-board plow nicely under favorable conditions. It also handles 20" disc plow and 10 x 16" disc harrow nicely.

Ogdensburg, N. Y.
Jan. 19, 1950

Dear Sirs:—

I purchased a four horse Shaw "DU-ALL" from you in the spring of 1936 and I must say I am very well pleased with it. I would like to know if you still have parts for it, such as belts, cultivators, and plow points.

I am very much interested in your riding tractors and would thank you many times if you would send me your 1950 catalog.

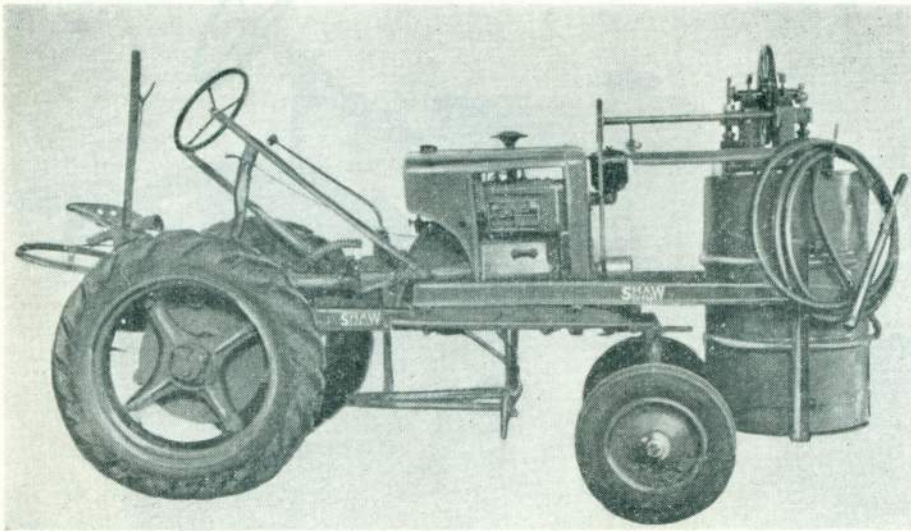
Many thanks for past favors.

Very truly yours,

Signed LYLE A. WATSON,
R. D. 1, Ogdensburg, N. Y.

—3—





This shows R12T tractor equipped with Sprayer No. SE325, shown on our price list. This sprayer attaches to any model **SHAW** Riding Tractor. It has plenty of capacity to operate two nozzels if desired. A boom may be attached behind the tractor for spraying several rows at one passing. This sprayer can be quickly attached or removed. Being mounted in front of the tractor frame the sprayer does not increase the width of the outfit and therefore will run between narrow rows and in "close" places. Its maneuverability is very desirable.

Arthur C. Palmer,
Waverly, New York.

Shaw Manufacturing Company,
Galesburg, Kansas
Gentlemen:

April 11, 1950.

The Master SHAW DU-ALL Tractor purchased from you in August 1940, your invoice No. 44538, has given very splendid satisfaction. I use the tractor about my place particularly drawing a trailer and it seems to be just the right size and weight for my purpose.

(Signed)

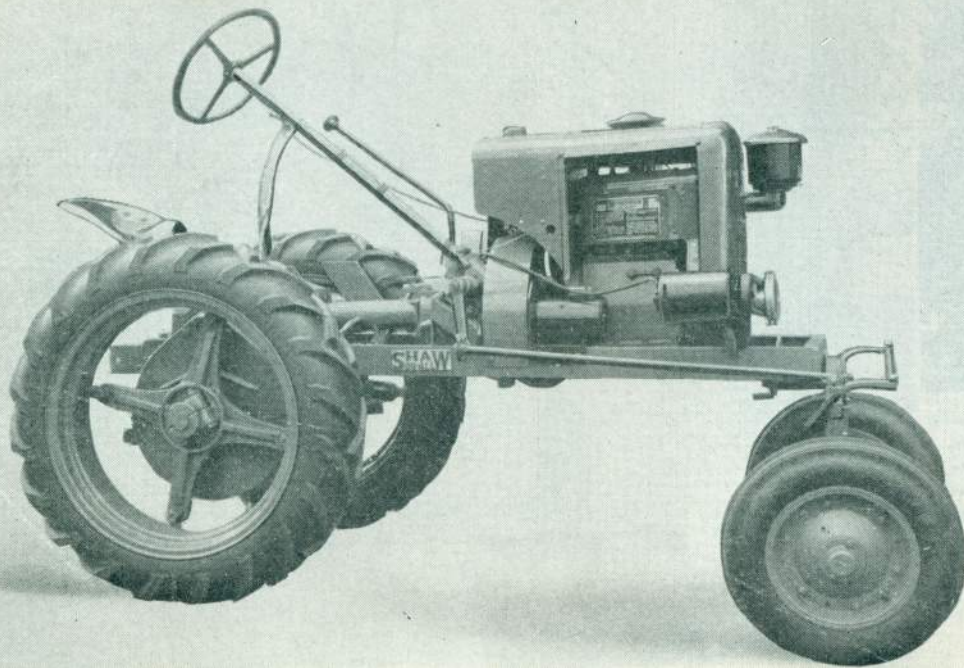
Very truly yours,
A. C. Palmer

The Tractor Mr. Palmer refers to was an 8 H.P. Model RD8.



Illustration to the right shows the R12T with Spraying equipment No. SE325 spraying apple trees. Orchard trees can be sprayed with a regular spray nozzle, however, for extra high trees the gun should have an extension. To spray extremely high shade trees, the hose may be extended then the operator may use a ladder to climb the tree as shown in the illustration above.



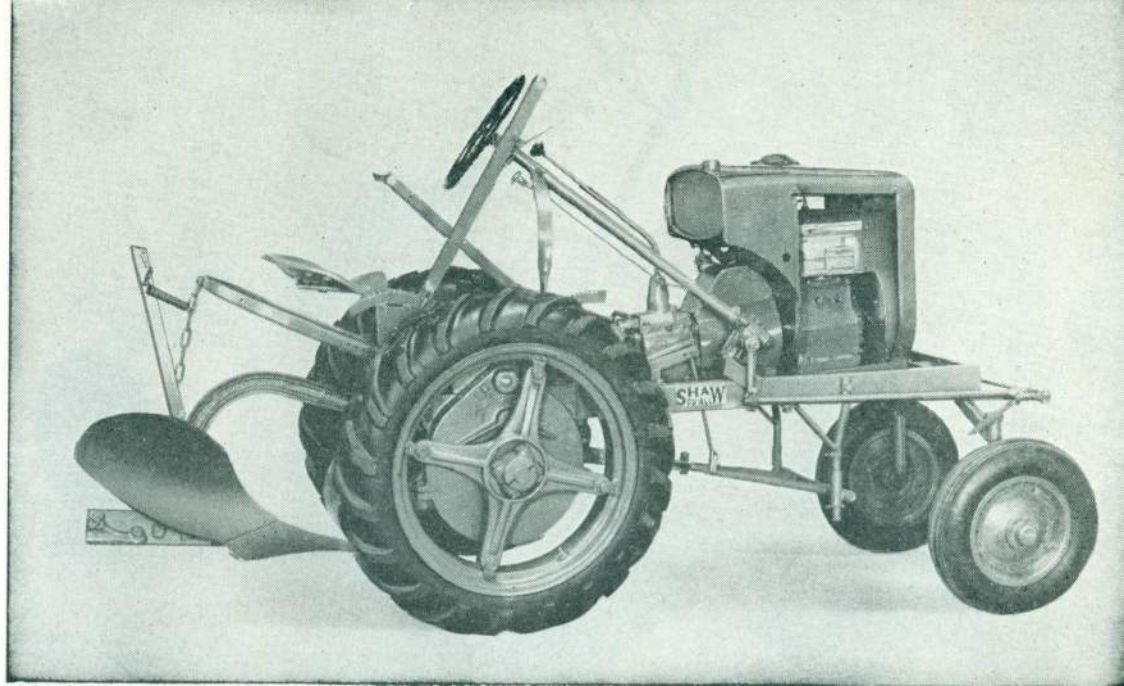


This Model R12T **SHAW DU-ALL** Tractor is equipped with Wisconsin air cooled twin cylinder Model TF engine which develops over 12 H. P.. 7 x 24" rear tires and 4.00 x 12" front tires, and shown with electric starter, generator and storage battery, same as used on popular makes of automobiles; repairs are available at automobile supply stores. The starter motor is equipped with Bendix drive which engages a hardened steel ring gear mounted on the same fly wheel that carries friction clutch. Starter push button is mounted in front of the steering wheel. The carburetor choke as well as the throttle are also located within easy reach of the operator. The electric generator is driven by a V belt from the engine shaft. Provision is made for easy adjustment of belt tension. The storage battery is 6 volt, has 90 Ampere Hours and is mounted on the frame to the left of the engine.

Model R12T **SHAW DU-ALL** Twin Cylinder 12 H. P. Tractor shown here with 7 x 24 rear tires and 4.00 x 12 front tires and 12 inch plow. This tractor will handle a 14 inch plow very nicely in most soils. The long plow beam is pulled by a hitch mounting near the front of the tractor so that there is no chance for the pull of the tractor to cause it to lift up in front as is possible with tractors which hitch separate plows behind the tractors. Control levers for the plow are mounted on the tractor within easy reach of the operator. **SHAW** Tractors and equipment all are designed not only for strength, efficiency and durability but also for the comfort and safety of the operator. Shown with crank starter but can supply with electric starter.

Mr. C. B. Stone, R. No. 1, Charleston, Illinois, writes:—"I am well satisfied with the 6 H. P. **SHAW DU-ALL** Tractor, and it is a wonderful little machine."

—7—





Here is the Model R12T **SHAW DU-ALL** Tractor with 14" moldboard plow and with "finger-tip" hydraulic control. All **SHAW DU-ALL** Riding Tractors can be equipped with hydraulic control for operating moldboard and disc plows, as well as snow plow, bulldozer, scoops, etc.

Springfield, Mass.,
91 Albemarle St.,
Nov. 14, 1939

Shaw Mfg. Co.,
Dear Sirs:

I have been so busy I have not had time to write. I have used my 5 H. P. Model RD5 SHAW DU-ALL Riding Tractor for plowing and harrowing, and I like it great. I plowed some land that has not been used for 20 years, and it did good work, for I was green at it. Two people stopped to see it work, though it did a good job. I wish I had had it sooner. It is getting cold here now and days are getting shorter.

Very truly,
G. H. Phillips

Here is a Model R12T **SHAW DU-ALL** Tractor equipped with DP26 Disc Plow with lever lift. This tractor handles the 26" disc plow nicely. We can supply it with hydraulic control as well as lever control. We also have the DP20 Disc Plow which is suitable for the Model R6 and Model R8 Tractor. These disc plows are well liked, especially in working soil that is too dry and hard for moldboard plowing.

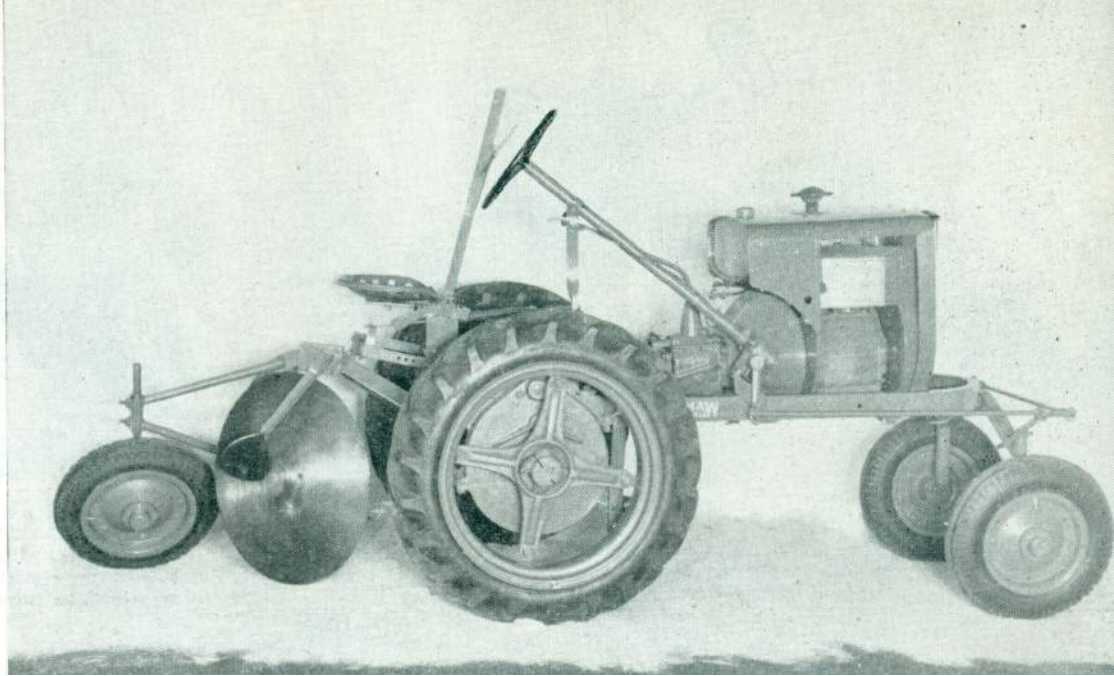
Grand Ledge, Michigan
June 28, 1941

Shaw Manufacturing Company,
Galesburg, Kansas.
Gentlemen:

My Model RD8 Riding Tractor is in almost daily use the year around, as it has replaced the horses on the 140 acres which I operate. It is a very satisfactory power unit.

Yours truly,
(Signed) Ralph Hart, R. No. 2

—9—





The above Model R12T **SHAW DU-ALL** Tractor is equipped with DP26 Disc Plow and hydraulic control. These tractors are built rugged and stand long hard service. The disc is made of heavy gauge special steel, making them very rugged and they are mounted on Timken Roller Bearings to give trouble-free long life.



The above Model R12T **SHAW DU-ALL** Tractor is equipped with DP26 Disc Plow. These disc plows are well liked in some soils that are difficult to work with a moldboard plow. Where the going is tough, a 10" furrow is about right, however in soils that work easier, wider furrows may be turned; here it is turning 11 to 12 inches.

The Model R12T Tractor is plowing with DP26 Disc Plow. These disc blades are tough and the entire job is rugged and will stand hard usage in stony ground and among roots, etc.

Mr. G. H. Emery, R. No. 3, Box 168, Altoona, Pa., writes:—"I purchased my DU-ALL Tractor in May, 1928. I have used it for cultivating corn and potatoes, charging batteries, shredding corn fodder, and also for running the grindstone. Have found it very satisfactory."

Mr. P. B. Crouse, R. No. 1, Burlington, N. C., writes:—"I purchased three of your SHAW DU-ALL Tractors with Tools—one for myself, and the two for my neighbors. I am well pleased with my DU-ALL."





The Model R8 **SHAW DU-ALL** does an excellent job with 12" moldboard plow. No team or tractor could do any better, and this **SHAW** owner is saving time and money too.

Bentonville, Ark.
Dec. 22, 1948

Shaw Mfg. Co.
Gentlemen:

I received my Shaw R9 Du-All through the Battery Implement Co. of Pea Ridge today and must say I had a glad surprise in store when I started plowing. It pulls the 10 inch plow in second gear with ease and 6 inches deep.

I am so proud of my R9 I want to take the best of care of it.

My sincere best wishes,
Signed Frank Price
Route 4
Bentonville, Ark.

(R9 was similar to current model R8)

Here comes an R12T down the furrow at a good speed, easily pulling a 14-inch plow through tough stubble. It can keep going at this clip all day long. The moldboard plows as well as disc plows can now be furnished with either hand lever or hydraulic controls, whichever is desired. If you are not familiar with plowing and do not know which type of plow would be most suitable for your soil, please write describing the nature of your soil and we will advise you what plow would be best.

Dayton 10, Ohio
March 24, 1949

Dear Sir:

I received my R9 Tractor and implements March 15th. I would have written you before but wanted to wait and try my tractor. Believe me I am really pleased. It is everything I had hoped and more. It is well designed and well built. I am sure it will give years of service.

Very truly,
Signed Victor L. Johnson
R. R. 2, Box 233

—13—





Since this illustration was made the channel iron frame member of the Model R8 SHAW DU-ALL Tractor has been rounded as shown on page 5. This illustration shows tractor equipped with 7.50 x 16" rear tires and 3.00 x 12" front tires. The tractor will pull a 12" plow easily in most soils and a larger plow under favorable conditions. Plow can be quickly removed and cultivator or other tools attached.

The Shaw Mfg. Co., Markham R. R. 1
Galesburg, Kansas Ontario, Canada

Dear Sirs:
I received shipment of my R7 riding tractor a few days ago, also the implements. I assembled the plow and did a bit of plowing. I think I am going to like this tractor fine. The plowing equipment was easy to assemble.

I expect others will be interested in your riding tractors when they see mine working. If I can interest a buyer, about where would they be available?

Thanking you for your trouble, I remain
Yours truly,
(Signed) CARL RAMEY

Note.—The R7 has been improved and is now the R8.—Shaw Mfg. Co.

The R8 SHAW DU-ALL runs along pulling the single disc harrow nicely. This is a very popular tractor. Pulling disc harrow throws extra weight on the traction wheels and gives good traction. It is advisable to use front wheel weights; or weight may be placed on front end of frame as shown here.

Mr. Andrew Wortman, O'Fallon, Mo., writes:—"In regards to my SHAW DU-ALL Tractor, I will say that it is a 'Do-All' sure enough. I can do as fine a job of cultivating as anybody can do with a two-horse cultivator and do it easier and quicker. I can lay 10 acres of corn by in a day with the discs on it. Last Spring I plowed heavy sod, and what I mean it was heavy, but my SHAW DU-ALL did the job O. K. I also use it for raking hay and hauling, too, and it does the job fine. Last winter I sawed wood with it, and I was really surprised at the power it has in the belt. It just can't be beat. And the best thing of all is, it runs so cheap."





The R12T **SHAW DU-ALL** runs right off with a big, double disc harrow—does an excellent job of smooth, level seedbed preparation. No team could cover so much ground as the R12T does day after day—and it would cost more to do the job with a big, high-priced tractor.

November 14, 1949

Shaw Manufacturing Co.
Galesburg, Kansas.

Gentlemen:

I have a HYS Master Du-All Riding Tractor Invoice No. 47575 dated January 24, 1942 Engine No. AHH-110273.

This makes eight crop years for my tractor. I have fifteen acres and it has given me very satisfactory service.

Yours truly,
(Signed) Thos. W. Cochren,
Box 375,
Wyoming, Illinois

(R8 tractor offered now has about the same power rating as above HY8)

This illustration shows the R12T Tractor with 7 x 24" rear tires equipped with front cultivator No. 30R, ST4 Spring Trip Standards and special spear point cultivator shovels. Regularly we supply reversible shovels instead of the single point shovels here illustrated. This cultivating equipment can be supplied with either the spring trip or the break pin type of tool standards. Control lever for lowering the cultivator gangs is conveniently located on the tractor frame at the operator's right hand side. An assist spring mechanism in the lever assembly helps the operator lift the cultivator from the soil easily. The high clearance of **SHAW** Riding Tractor permits cultivation astride tall rows. Usually corn can be "laid-by" with Shaw Tractors running astride the row, however, the models with 6" or 7" by 24" rear tires will run between rows 42" apart, thus permitting cultivation after plants are too tall to straddle.

—17—



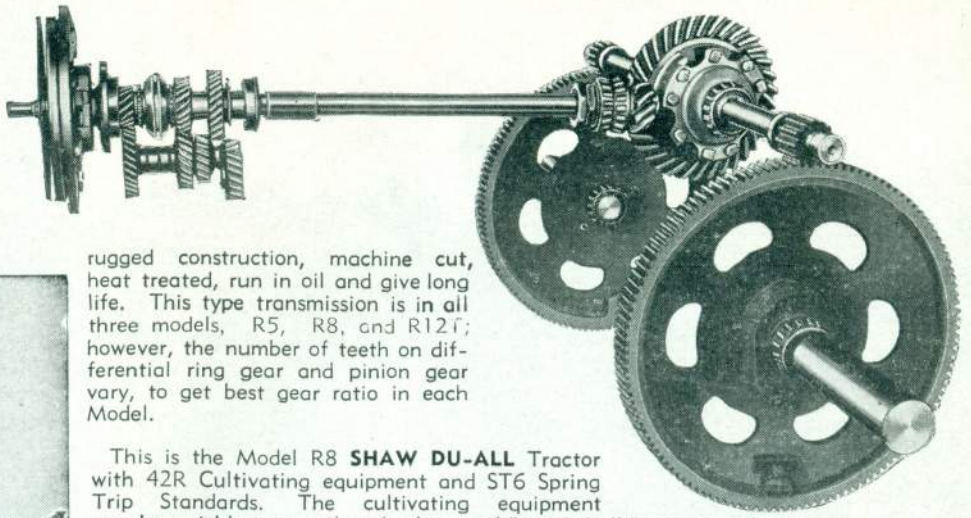


This is the R12T **SHAW DU-ALL** Tractor with the B32C Cultivating equipment with ST4 Spring Trip Standards. It is a pleasure to operate this tractor and boys as well as men enjoy working with it.

Some operators prefer cultivating equipment mounted at the rear of the tractor. For those who prefer cultivating equipment mounted only in front of the rear wheels, we offer No. 30R shown on another page. In addition to the rear cultivator shown here, our No. 42R Cultivator includes two cultivator beams and two shovels mounted underneath the tractor frame ahead of the rear wheels. Both front and rear cultivator gangs of the 42R Cultivator connect to the lever control mechanism at the right hand side of the operator for raising and lowering the shovels.

Remember we offer 10 days trial at your own work.

This illustrates the transmission from the clutch to the rear axle shafts inclusive. The clutch as well as the synchronous selective transmission gear and the differential gears are of automotive type, all of very rugged construction and are not likely to need replacement, however, in case of emergency, these repair parts may be obtained at many Auto Supply Stores. It will be noted by the above illustration that the train of transmission gears use ball and roller bearings of liberal size for factor of safety. The gears are all of



rugged construction, machine cut, heat treated, run in oil and give long life. This type transmission is in all three models, R5, R8, and R12; however, the number of teeth on differential ring gear and pinion gear vary, to get best gear ratio in each Model.

This is the Model R8 **SHAW DU-ALL** Tractor with 42R Cultivating equipment and ST6 Spring Trip Standards. The cultivating equipment can be quickly removed and plow moldboard, bulldozer or other equipment attached. The hand lever located on the right hand side of the frame is used for lifting both front and rear cultivating gangs at the same time. This lever is also used in connection with the moldboard plow.

—19—



R12T TRACTOR WITH HARROW

This shows the Model R12T Shaw twin cylinder riding tractor pulling two H5 Harrows by means of the HB2 Hitch Bar. This is light work for the R12T—in fact, any of our riding tractors will pull this two section harrow nicely. The R6 and R12T Tractors will pull it at a higher speed than the R5 Tractor will.

Greencastle, Pa.,
July 1, 1942

Shaw Mfg. Co.,
Galesburg, Kansas
Gentlemen:

We sure do like our tractor (Model RD8).
It is doing very good, and would not know
how to get along without it.
Earl Lesher, R No. 3

(The Model RD8 was built a number of
years prior to World War II. Power rating
was about same as current R3).

—20—



Illustration shows 8 H.P. 1938 Model **SHAW DU-ALL** Tractor with Cultivating Equipment complete with six standards and six cultivator steels, with rear bars and front cultivator beams. This boy, 14 years of age, had never driven a car or tractor of any kind but started right off doing a good job with the **SHAW DU-ALL** cultivating beans for his father.

Shaw Mfg. Co. Carthage, Missouri
Galesburg, Kansas March 30, 1950

Dear Sirs:

If you are making lawn mowers and attachments, for the H2 PEPPY PAL Tractor, please send me price list.

I purchased my H2, in September, 1946. It has done a lot of work, and is still good as new. It beats them all.

(Signed) Respectfully Yours,
Charles H. Dusher
R. R. 2
Carthage, Missouri

We will send information on request about Model H2 and other "walking" tractor models.

—21—





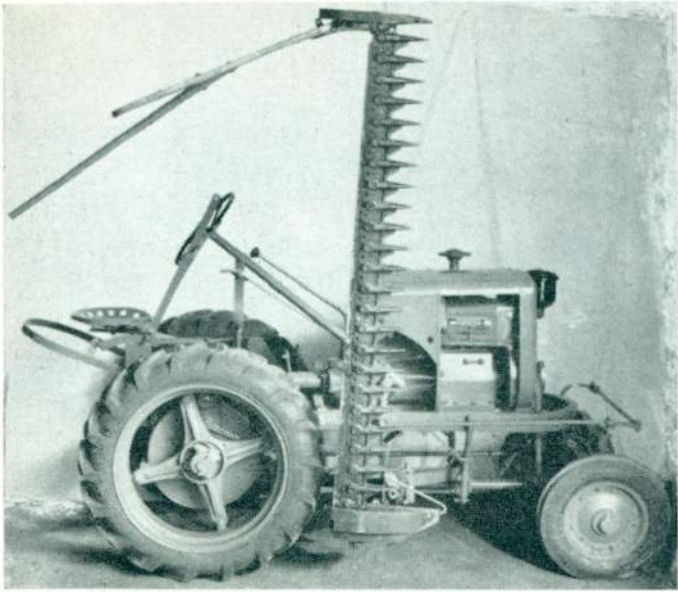
This shows a previous model which has been developed into the present Model R8 **SHAW DU-ALL** Tractor. The Cultivating Equipment shown here is adjustable from 30" to 44" width, and is designated by order No B36C. This cultivator does not include any shovels for mounting in front of the rear wheels. It is arranged so that standards and shovels may be set at any desired spacing along the bar except the two points where the two pull bars attach to the tool bar. Five standards and steels are regular equipment, but more can be added. See general price list of tractors and attachments. As indicated by this and other pages of this booklet several types of cultivators can be supplied. **SHAW DU-ALL** Tractors and equipment fill a wide variety of needs. If you need advice regarding tractor size and tool selection, we will be glad to answer your inquiries. Illustration of wide tread and wide cultivator together with prices will be sent on request. **SHAW** Tractors are handy for drilling wheat between rows of matured corn.

The R8 **SHAW DU-ALL** Riding Tractor as well as other models of **SHAW** Riding Tractors can handle the 5 foot CB60R Cutter Bar Attachment nicely. Even the R5 **SHAW** Riding Tractor will handle the 5 foot cutter bar but when cutting with the Model R5 it is necessary to use a lower gear than when using our larger riding tractors. The CB60R Cutter Bar can be furnished for any current model of **SHAW DU-ALL** Riding Tractor.

Cutter Bars for pre-war models can also be supplied on special order. Prices on application.

Mr. Chas. New, R. No. 4, Muncie, Indiana, writes:—"I have been lately learning to run my DU-ALL Tractor on a piece of land—wet muoky, part of it alfalfa. I got my alfalfa plowed up. Some of the neighbors were skeptical about me plowing it. I plowed deep as other large tractors were plowing."





This is Model R12T **SHAW DU-ALL** Twin Cylinder Tractor with 6 ft. cutter bar. The models R6, R8 as well as R12T, handle the 6 ft. cutter bar nicely, however, in real heavy cutting we recommend the R12T or R8 models. We also furnish 5 ft. cutter bars which are suitable for all present model **SHAW DU-ALL** riding tractors. On special order we cut down the 5 ft. cutter bar and knife to 4 ft. or whatever length customer desires. Short cutter bars are often desirable in cemeteries, parks, estates, etc. The driving shaft, pitman and all parts are built rugged to stand hard service. Can now be supplied with Timken and ball bearings instead of bronze bearings at small extra cost.

You can buy Tractors at lower prices, but price is not everything. Really, folks, when purchasing a tractor to do the work of horses or mules, well if it is to do the work you want a "trouble free" tractor that has stood the test of years. Look them over. Remember you buy the Shaw Tractor, any model on 10 days trial, if for any reason you are not satisfied, simply return the tractor and we will refund the purchase price.

Shaw Manufacturing Company,
Galesburg, Kansas.
Gentlemen:

Wayne and Roberts Aves.,
Philadelphia, 44, Penna.
May 24, 1950

I have recently purchased at second hand a model RD8 DU-ALL* tractor. The attachments that came with it work so well that I am interested in getting a cultivator.

Will you kindly send me a catalog of parts and accessories and also a manual of operating instructions for this type tractor, if they are available.

(Signed)

Yours truly,
Andrew P. Hastie.

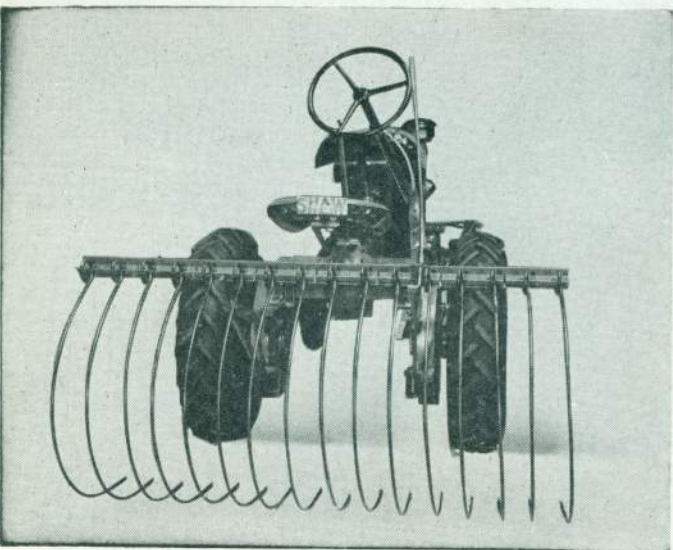
*EDITORS NOTE: The model RD8 is an 8 H.P. 4 wheel riding tractor built in 1938 and 1939.

Model R8 and R12T **SHAW DU-ALL** Tractors handle the 10 foot, No. 10F Hay Rake Attachment nicely. This rake can be attached or detached in a few minutes and is easily handled. We also supply this style rake No. 130R which is 5 ft.; it is shown on another page.

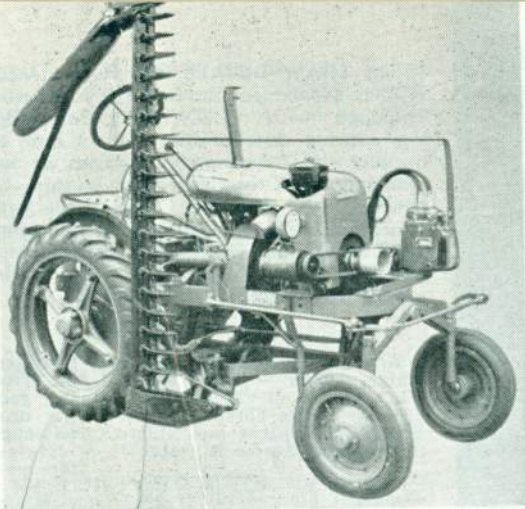
This rake being mounted directly to the tractor frame is quite maneuverable. The teeth are properly spaced to do a clean job. Various tools may be quickly and easily attached or removed so that any **SHAW** Riding Tractor can be used for many different types of work. You will find **SHAW** Tractors and attachments sturdy, dependable and efficient. They are the out growth of nearly half a century's experience in the manufacture of engines, tractors, attachments, and vehicles of various kinds including bicycle motor attachments, buggy motor attachments, motorcycles, "Railroad hand-car" motor attachments and small automobile.

—25—



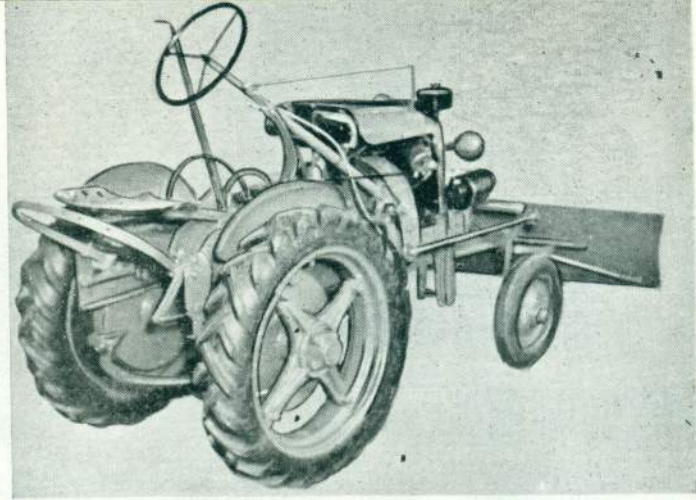


These two illustrations show the Model R6 **SHAW Du-All** Tractor equipped with 13OR, 5 foot Hay Rake. The rake can be quickly attached to any model **SHAW** Riding Tractor and is held by four bolts. When ordering, specify model of tractor so that we may supply the proper brackets. It is easily operated and a boy can manage it. Will pull much larger rakes



This Model R8 is equipped with a 5 foot Cutter Bar with hydraulic lift. This same hydraulic equipment also operates plows and cultivators and may be hooked up to lift the saw for running from one wood pile to another, see page 39.

Here the Model R8 **SHAW DU-ALL** is equipped with bulldozer with hydraulic control. It also works nicely for snow plows.



Shaw Manufacturing Co.,
Galesburg, Kansas.
Gentlemen:

I have one of your 8 h.p. riding tractors which I purchased in 1940, as I remember. I am glad to say this little tractor is still going strong.

630 Wappoc Hall Road,
Charleston 42, S. C.

It has been used each summer to cultivate something like 2½ acres of orchard and garden, used during the winter for any work needed. The original tires are still in use. The only repairs ever needed was a re-winding of the magneto coll.

(Signed)

Very Truly,
R. C. Haltom



The **SHAW DU-ALL** 5 H. P. Model RD5 is economical for mowing parks when equipped with CB60M 5 ft. Cutter Bar. For mowing close to the ground and especially when mowing short grasses we recommend using the lespedeza cutter bar which can be furnished at a small extra charge. The ease of handling and short turning of the **SHAW DU-ALL** Tractors makes them well adapted for mowing around trees, etc.

Mr. Carl E. Webber, R. F. D., Boothbay, Maine, writes:—"My **SHAW DU-ALL** Tractor works swell. It handles the plow good, also my single horse disk harrow, a drag, a cart, cultivators and hillers. The longer it runs, the better it works."

Mr. Chas. A. Locke, R. No. 1, East Alton, Ill., writes:—"I have a **SHAW DU-ALL** Tractor purchased in 1935. It is still going strong. In fact, I have not spent a cent for repairs."

On this R6 **SHAW DU-ALL** the 5 foot Cutter Bar Attachment No. CB60R will do heavy cutting in high gear. Can be taken off or put on any **DU-ALL** in a jiffy. Cuts well in intermediate, and in low gear in close places. Uses standard 3" mower knife section. We now furnish the same type of cutter bar in 6ft. lengths, No. CB72R, for R8 and R12T **SHAW DU-ALL** Riding Tractors. They are all very rugged construction and will do good work for many years.

The new more powerful Model R8 replaces the R6 formerly offered.

Shaw Mfg. Co. January 18, 1949
Galesburg, Kansas. Bayard, Fla.

Dear Sir:

My R12T Tractor arrived the latter part of last week. It is everything I expected it to be and seems to have sufficient power to do anything expected of a tractor of its type. We are very well pleased.

Yours very truly,
Signed F. S. Killegrew

—29—





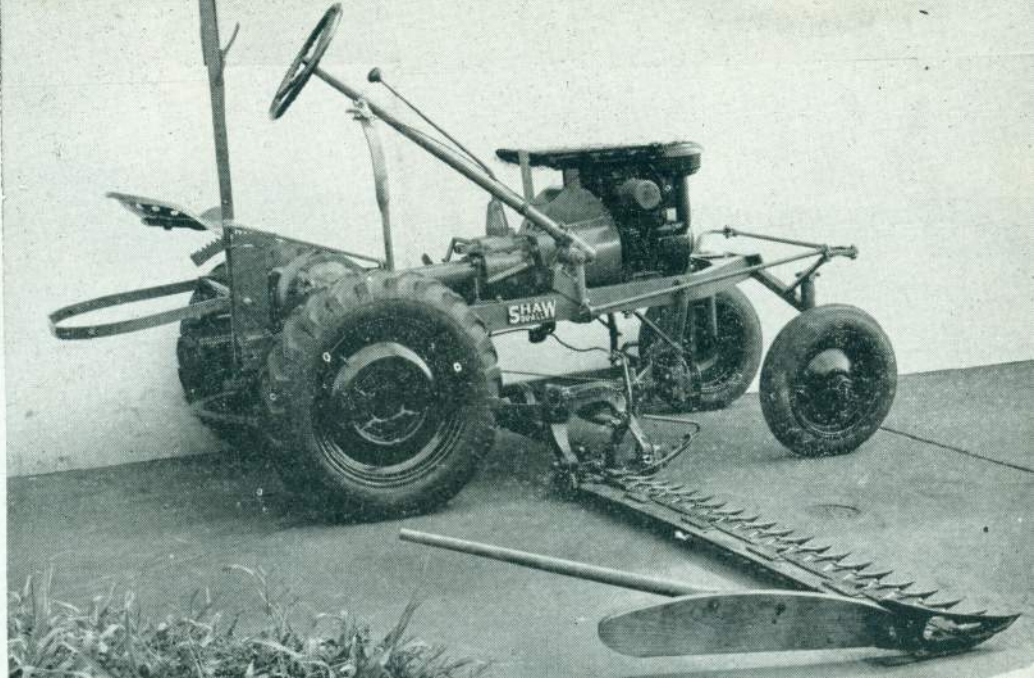
This shows previous model 5 H. P. **SHAW DU-ALL** Tractor with 5 foot No. CB60R Cutter Bar Attachment, mowing a rank growth of weeds. All cutter bars for the **SHAW DU-ALL** Riding Tractors are of rugged construction and will do the same and more mowing than horse drawn machines will do. The cutting knife is driven by belt from the front end of the engine crankshaft. This permits good mowing even when the ground is quite wet and soft. The tractor has been improved and from it we developed the present Model R6 **SHAW DU-ALL** Riding Tractor which develops over 7 H. P.

Mr. Frank M. Young, 582 Vernier Road, Grosse Pointe, Michigan, writes:—"I bought my **SHAW DU-ALL** Tractor September 12, 1929 from Mr. S. M. Sholl of your Columbus, Ohio, Branch, and have had 10 years of satisfactory service."

This shows the Model R5 **SHAW Du-all** Tractor equipped with No. CB60R 5 foot, Cutter Bar Attachment.

HOOD shown here is NOT the latest model. Hood same style as on the R8 Tractor shown on page 5 is standard equipment on R5, R6 and R8 Tractors. The Model R5 handles the cutter bar nicely when running in intermediate gear, even when doing real heavy cutting. For light cutting the tractor may be shifted into high gear and does a very nice job. For exceptional heavy cutting of large, hard weeds, etc., it may be run in low gear. This cutter bar will fit all models of Shaw Riding Tractors, however, when ordering cutter bar state the model of the tractor on which you will use it. The cutter bar may be quickly detached and plow, cultivating equipment, snow plow or other equipment may be attached in a jiffy. The knife sections are 3" wide, being same as on popular makes of mowing machines, knives and guards may be obtained from implement dealers

—31—





This shows **SHAW DU-ALL** 5 H.P. Tractor with mowing equipment No. M3E30 which consisted of three 30" Crestlawn Mowers with iron wheels and all steel unbreakable jiffy hitch. Instead of 30" mowers we now offer 25" mowers equipped with rubber tires—see price list and order the No. 3G25.

The later style hitch included with 3G25 gang of three lawn mowers is similar to the one illustrated here but pulls all three mowers as a combination three gang unit behind the tractor. The hitch quickly attaches to the tractor draw bar simply by dropping the hitch pin into one of the holes in the tractor drawbar. The hitch is flexible permitting each mower to follow the contour of the ground. For smaller areas we offer LM25 single lawnmower, 25" cut, with hitch. It attaches to drawbar.

Of course, the larger model tractors also will handle the 3G25 mower nicely.

SHAW DU-ALL Tractors come in handy for hauling too. They are easy to handle and Ladies as well as boys and men like to operate these tractors. The conventional type of trailer hitch bolts onto the draw bar of the **SHAW DU-ALL** Tractor making it an excellent combination for light hauling as well as a load up to 2 ton or more.

Monastery of our Lady
of the Rosary
Rosary Shrine
Summit, N. J.

Shaw Mfg. Co.,
Galesburg, Kansas.

Gentlemen:
The Tractor (Model R6 with SP53R Snow Plow) has given excellent service throughout the winter. Our sidewalks were the best kept in the city and we were the envy of "shovelling neighbors." Our maintenance man is trying to sell the idea to a funeral director across the street. It cost this man \$40 every snowfall and it snowed plenty.

Sincerely,
The Dcmínican Nuns

—33—





Any Riding Model **SHAW** Tractor with our PD10M Potato Digger will make short, pleasant work of digging a potato crop. The Potato Digger is a middle breaker plow with potato fingers instead of moldboards or wings. Note how it plows a deep furrow and leaves the potatoes on the surface where they can be readily picked up.

If you order H2C hydraulic control with tractor and moldboard plow same control will operate potato digger.

Mr. J. W. Schwager, Davenport, North Dakota, writes:—"I have eight acres besides a fairly large garden which are worked and cultivated by my SHAW DU-ALL. Thus far I have carried on experimental work for the North Dakota College of Agriculture with flax, soy beans, wheat, barley, alfalfa and crested wheat grass. It is needless to say that without my SHAW DU-ALL I would be deprived of a lot of wholesome enjoyment."

This field of soybeans is being well cultivated, quickly, easily, and economically by a powerful Model R8 **SHAW** Tractor with 42R Cultivator.

When equipped with 6 x 24" or 7 x 24" rear tires the tractors will run between rows 42" apart so that cultivating may be continued after crops are too tall to cultivate astride the row. There is about 24 inches in height under axles.

Mr. T. B. Cutchin, Rt. 3, Box 321, White Wille, N. C. wrote March 27, 1950: About a year ago I received my R9 Riding Tractor from you. I have been well pleased with it. I have used it in all kinds of work and it pulls like a mule every where. I would like to know if the Hydraulic Control is adapted to use on my tractor and the cost of it. Please send me to springs for the lift of my turn plow No. SO12M and deduct it from my credit with you. Enclosed is a negative of my boy 5 years old, hauling hay.

NOTE: Model R9 developed about the same horse power as current Model R8.





This shows 8 H.P. 1938 Model **SHAW DU-ALL** Tractor pulling 8 foot International Combine. Photograph was taken in action which accounts for the blurred appearance. 8 H. P. **SHAW DU-ALL** runs right along nicely in second gear although the ground was rather spongy caused by recent rains. Pulls the same combine in high where the ground in the harvest field is firm. In a test the **SHAW DU-ALL** equipped with 8 H. P. Engine and dual traction wheels pulled a 10 ft. International Combine, however, we do not recommend pulling such heavy loads but make these tests simply with a purpose of determining what the tractors will actually pull.

Mr. J. J. Kliment, R. No. 1, Hines, Minnesota, writes:—"I find my SHAW DU-ALL Tractor indispensable—sort of 'Man Friday' always ready to do any kind of work. I use it for plowing, cultivating, mowing, grass cutting, clearing, sawing, and ice making."

This shows an older model **SHAW DU-ALL** tractor with single row corn and cotton planter with fertilizer attachment. This may be used in large or small fields, on any Model **SHAW** Riding Tractor. Any of the present models of **SHAW DU-ALL** Riding Tractors will handle this single row planter or two row planter. Various makes of planters designed for horses or mules may be altered by shortening the pole and hitching to the tractor.

Mr. E. L. Moore, R. No. 2, Box 257, Terre Haute, Indiana, writes:—"I examined six other tractors before buying **SHAW DU-ALL**. Have given it about all the tests I could think about. I have plowed and cultivated everything that grows in a garden, also tobacco, raspberries and strawberries; pulled stumps, etc. Have done all work in one-fourth the time and less expense than it would take horse and push plow combined."





A. A. Fairbanks, Alaska, writes:—"Our 5 H. P. SHAW DU-ALL Tractor has the Super Speed Gear Shift Attachment. In case you are interested, we have converted this tractor into a moderately successful motor sleigh."



Mr. Mark W. Weeks, The Fort Scott Greenhouse, Fort Scott Kansas, writes:—"The SHAW DU-ALL Tractor is very satisfactory and we bless the day we bought it. We are more than pleased with our tractor and the good work it does."

Here we show the Model R12T SHAW DU-ALL Tractor loading finely crushed rock with the No. 40L Loader, which has 1-4 cu. yd. scoop with hydraulic control. The same scoop of course can be used for handling sand, earth, grain, etc. Prongs may be added to the scoop for handling manure. The scoop raises to a height of approximately 7 ft. This loader may be attached to the R8 Tractor as well as the R12T Tractor.

We have improved the loader by using two cylinders instead of the one shown. The new loader is No. 40L-2.

Mr. Bancroft Winsor, Flying Cloud Farms, Inc., Acushnet Station, New Bedford, Mass., writes:—"On the back page of the Rural New Yorker, of January 13, I noticed your ad for a new 4-wheel tractor. I am interested, as we have two of your SHAW Tractors at present and have always been well satisfied, and would like very much to have some information about this tractor and the price of it."

Model R12T **SHAW DU-ALL** Tractor, sawing dry hard Osage Orange into fence posts and stove wood lengths with a 30" saw on our No. 300 Tilting Table Steel Saw frame, mounted on side of tractor. The saw frame rests on the ground when sawing and is raised and hooked up for running from one job to another. It is a worker and will keep several men busy handing wood to it. We can also furnish saw for felling trees as well as sawing them into cordwood, etc.

Fencing was a problem in the early days in Kansas and the pioneers obtained the Osage Orange seed from the territory of Osage Indians where it was native. Osage Orange being quite thorny, when planted close together, made a hedge fence suitable for retaining livestock. When putting in the REA electric lines, these hedge fences, which in many places had grown to the height of electric poles, have to be bulldozed out. The wood is orange color and when dried is very hard, and we have yet to see an Osage Orange post that has rotted. It makes excellent fence posts and fire wood. Anyone wishing a thin piece sawed from an Osage Orange tree, we will be glad to mail it free on request.





This shows a Model R12T **SHAW DU-ALL** Tractor equipped with bulldozer removing ice from side walks and drives. For removing ice the snow plow equipped with bulldozer blade does a much better job than it would without this additional blade. Freezing rains broke down many trees and shrubs, as well as power lines and telephone lines in and around Galesburg, Kansas, in January 1949 when the picture was taken. We supply snow plows for all **SHAW DU-ALL** and **PEP-PY-PAL** Garden Tractors. We can supply snow plows and bulldozers for all **SHAW** riding models of tractors hydraulic operated or lever operated, whichever is desired.

Owners of Shaw Tractors find many ways in which their powerful, efficient, attractive Shaw machines help them do their work economically and quickly.

Many customers drive to our factory, warehouses, and dealers and haul our riding tractors as well as walking type tractors in trailers. The **PEPPY-PAL** Tractor may be hauled very nicely in most automobile trunks by tying them in with rope. Some drive a distance of more than a thousand miles (over 2,000 miles round trip) and haul their **SHAW** Tractors.

One customer purchased a R12T Tractor and drove it home across several Kansas counties, across an adjacent State and into the third State. Shaw Tractors have a very practical range of speeds. We refer you to specification sheet in this booklet.

Mr. James M. Jensen, Nortonville, Kansas, writes:—"I have not a kick of any kind for your **SHAW DU-ALL** Tractor. I use it for anything — cultivating, planting potatoes, discing. It does the work so well that I do not care to try any other make of garden tractor. I bought it from second owner, and I intend to keep it till it quits on me. When it does, I will send you an order for a new one."

—41—



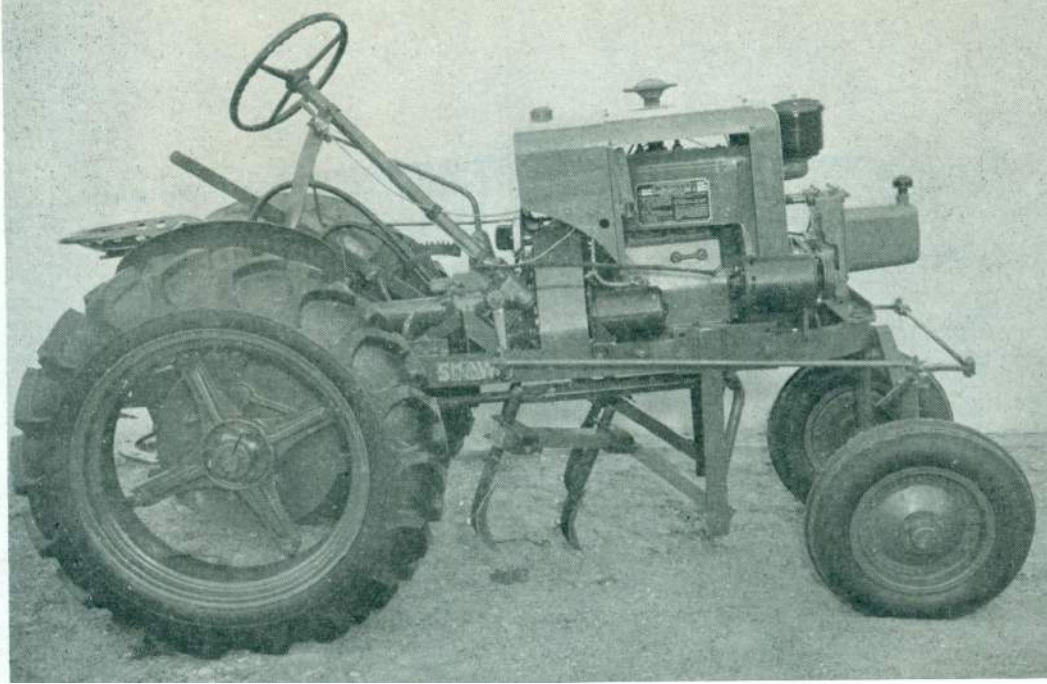


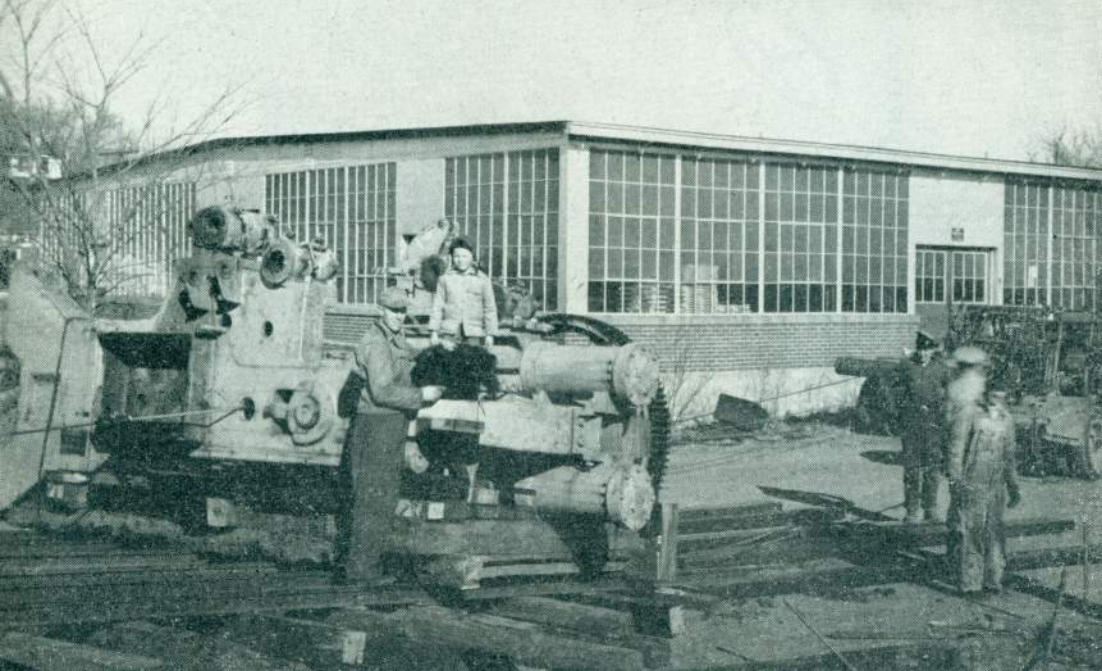
This shows our Warehouse No. 3 and one of our truck-tractor vans loaded with **SHAW DU-ALL** and **PEPPY-PAL** Tractors ready for trip to Canton, Ohio. We now have several trailer vans in our fleet about like the one here, as well as other units. This equipment is on the road almost continually running from coast to coast and from Canada to Mexico delivering tractors to warehouses and dealers and returning with materials and supplies for building **SHAW** Tractors. We can probably arrange delivery direct to your door anywhere in the United States if accessible by highway providing you buy in van load lots.

TEN DAYS TRIAL: You may give any model **SHAW** Tractor 10 days trial at your own work, then, if it is not entirely satisfactory, you may return it to us at the end of 10 days and we will refund your money.

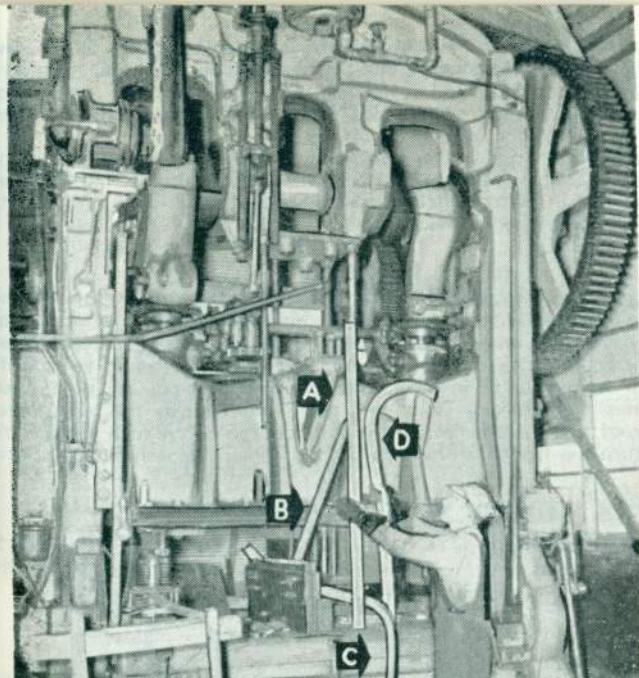
This Model R12T SHAW DU-ALL Tractor is illustrated with ES1 Electric Starter, 30R Cultivator, and HC3 Vickers Hydraulic Control. This makes an excellent cultivator with finger tip control. It is equipped with 4 No. 2370 4x8" cultivator steels. Spear pointed No. DF35 Shovels (like those shown on tractor, page 33) may be substituted in place of the 2370 Steels. This cultivator is regularly supplied with 4 BP4 standards and 2370 Steels. Sometimes it is desirable to put 3 instead of 2 cultivating tools on each side and we can furnish extra BP4 Standards for that purpose. This hydraulic control can be used for controlling moldboard plow, cutter bar, disc harrow, bulldozer, snow plow, etc. The tractor when equipped with this Vickers Hydraulic Power Pack can easily be equipped with 40L2 Loader; when tractor is already equipped with this Vickers Power Pack an allowance of approximately \$60.00 for the power pack will be made.

—43—



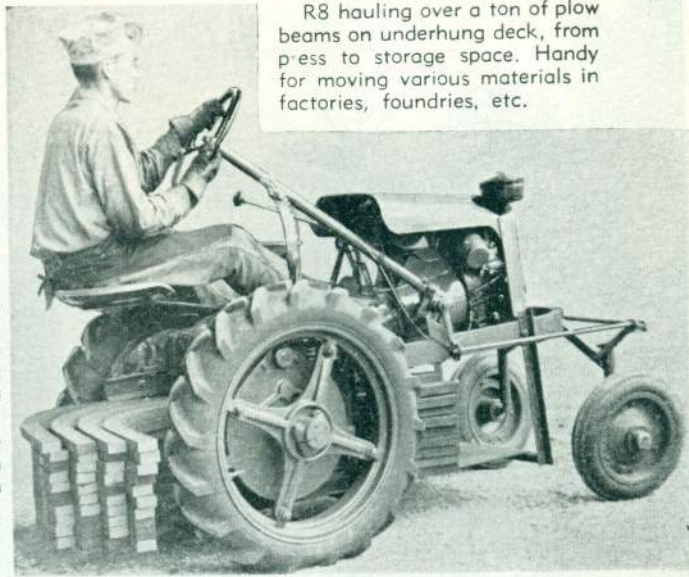


This shows our largest press (pictured here lying on its side—when erected is 16 ft. high) a Toledo double crank press, weight 90,000 lbs., unloaded from a Gondola Car being skidded on Railroad rails into position just outside our factory building shown here. We built an addition and are now using the press in production of **SHAW DU-ALL** and **PEPPY-PAL** Garden Tractors. It is shown at work on page 45. It forms parts quickly, piercing steel for a dozen or more bolts in a single stroke. We have many photos of numerous machines at work producing parts for the **SHAW DU-ALL** and **PEPPY-PAL** garden tractors. Standing by the press is Stanley B. Shaw, and his son Stanley Lynn Shaw is standing on the press with his dog Susie at his feet. Granddaddy, Stanley W. Shaw, was behind the camera.



This press, 300 ton capacity, is forming plow beams. A straight bar of plow beam stock cut to length is shown at Arrow "A". To form this bar of steel into a plow beam it is placed in the press, between the dies then the electric button is pushed starting the ram to move down slowly but surely to shape the beam as shown at Arrow "B". Then this beam is placed in position shown at "C" to curve it near the front end. These two operations "B" and "C" are completed by a single stroke of the press ram thus forming the beam as shown at "D".

—45—



R8 hauling over a ton of plow beams on underhung deck, from press to storage space. Handy for moving various materials in factories, foundries, etc.

Model R12T **SHAW DU-ALL** Tractor is shown here with SP53R Snow Plow with BB53 Bulldozer blade. HC2 Hydraulic Control, instead of lever control, can be supplied for only a few dollars extra. Will throw snow or earth to right or left side or may be set straight for dozer work. Available for any model **SHAW** Riding Tractor.

Both bulldozer and loader can be on tractor at same time and both can be operated hydraulically. Excellent for contractors, builders and landscapers. Bulldozer hitch is somewhat different when furnished for use in connection with loader.

GUARANTEE

We agree to make good by repair or replacement to the original owner, whether purchase is made direct from factory or through a dealer, any defect in material or workmanship of any **SHAW** Tractor, Power Mower, Tools, or Equipment, provided the defective part is delivered to us within one year from date of invoice transportation prepaid. Equipment such as Engines, Carburetors, Tires, etc., are guaranteed by the manufacturers thereof and we are limited by their guarantee on such items. You may return the tractor within ten days, if for any reason it is not satisfactory.

SHAW MANUFACTURING CO.

Center & Front Sts.,
Galesburg, Kansas

668 N. 4th St.
Columbus 8, Ohio



**SPECIFICATIONS OF SHAW DU-ALL
RIDING TRACTORS**

TRANSMISSION: Selective Sliding Gears Synchronous Automotive Type, alloy steel, forged, cut and heat treated. Three speeds forward and a reverse.

AXLE: Rear, two round alloy rear axle shafts mounted in strong iron housings and supported by Timken Roller Bearings. Width over outer ends of axle shafts, 39 inches. Front, square open hearth steel, 38" over hub caps.

BRAKES: Brake Drums are on jack shafts and enclosed. Bands lined with woven asbestos linings which last for years. Foot operated.

TREAD: Rear wheels, with 6 x 24" tires, adjustable from approximately 28 to 44 in. Front wheel tread is fixed. We can supply adjustable front wheel tread on special order at small additional charge. Rear wheel tracks cover front wheel tracks except when rear wheels are set for wide tread.

WHEELBASE: 60 inch is regular. 54 inch our option on R5, or your option on R8.

DRAWBAR: Heavy steel, has several hitch holes.

BEARINGS: New Departure, Timken and other high grade ball and roller bearings.

PLANT CLEARANCE: Model R12T and Model R8 have about 24" plant clearance when equipped with 7 x 24" or 6 x 24" tires, and about 22" with 7.50 x 16" tires. Model R5 with 5.50 x 16" tires has about 20" clearance, or more with larger tires.

FINAL DRIVE: Dual gears, run in oil.

CLUTCH: Single dry plate, automotive type, foot operated.

TIRES: The sizes in keeping with the horse power are recommended, as illustrated and described in this catalog.

HORSEPOWER: Engines are rated as follows: at their peak output. R5—5 H. P.; R8—8.25 H. P.; R12T—13.3 H. P.

CAPACITY: Based on 10 hours working time and favorable plowing conditions, **SHAW** Model R12T will plow 9 or 10 acres, Model R8 will plow 5 or 6 acres and Model R5 will plow 3 or 4 acres.

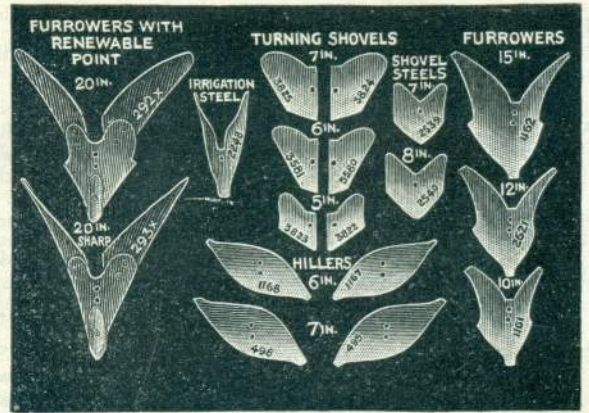
SPEEDS: Models R8 and R12T with engine running at normal speed—2 1/4 to about 7 M.P.H. Speeds can be varied with hand throttle to run slower or faster than the speeds given above.

COLOR: Green enamel.

WEIGHTS: Approximate. With hand starter, Model R12T—1150; Model R8—950; and Model R5—825 pounds; if equipped with electric starter, add about 100 pounds.

Runs between corn rows and similar crops spaced 42 inches, or wider, when equipped with 6 x 24 or 7 x 24" rear tires.

SHAW MANUFACTURING CO.
 Center & Front Sts., Galesburg, Kansas
SHAW DU-ALL Tractors and Power Mowers



Illustrations above show a few of the many tillage tools quoted on our price lists.